

CLEARFIL™ AP-X

Light-curing restorative Composite resin

5 Convincing advantages of CLEARFIL™ AP-X

Clinical experience since 1993 and scientific backup guarantee a product which offers superior esthetic appearance and exceptional physical properties. CLEARFIL™ AP-X offers the following 5 advantages.



1 High Wear resistance

CLEARFIL™ AP-X is a microhybrid composite heavy filled with inorganic filler, mainly fine barium glass particles in high density by 85% of its weight. This is one of the reasons for the unusually high wear and fracture resistance performed by CLEARFIL™ AP-X. A truly convincing value for durable posterior restorations.

2 Excellent Polishability

The high number of fine filler particles (smallest 0.04 µm) provides excellent polishability. As an effect high esthetic results can be achieved, perfectly suited for challenging anterior restorations.

3 Low polymerization shrinkage

In addition the high dense filler content is one of the reasons for a very low polymerization shrinkage of 1.9% which reduces stress forces against cavity walls dramatically. As an effect the risk of postoperative sensitivities and secondary caries due to marginal leakage is limited.

4 Visible radiopacity

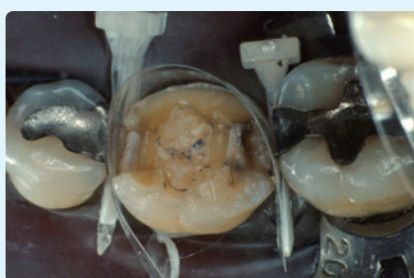
Absence of marginal gaps can be easily followed up as the material offers excellent radiopacity for x-ray evaluations due to its high percentage in barium glass particles.

5 Easy Handling

With a special non-sticky-formula, CLEARFIL™ AP-X does not stick to any instrument or contact matrix, and also offers convenient adaptation towards additional composite layers and is therefore optimally suited for anterior restorations. On the other hand the consistency of CLEARFIL™ AP-X is more than adequate to allow precise shaping in posterior areas.

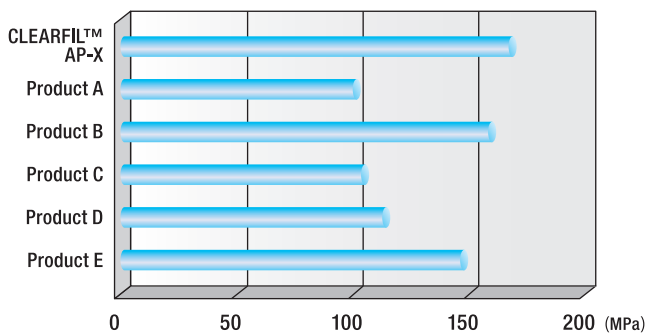
Clinical case

Restoration of Class II cavity



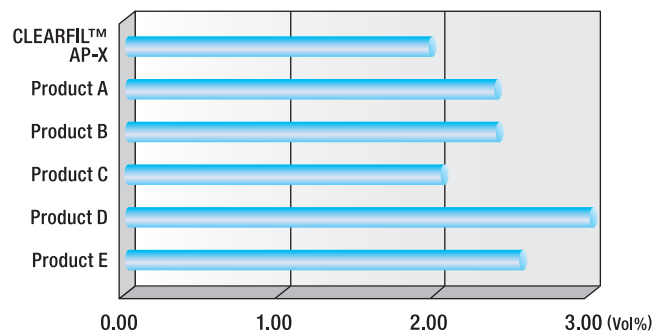
Physical Properties of CLEARFIL™ AP-X

Flexural strength



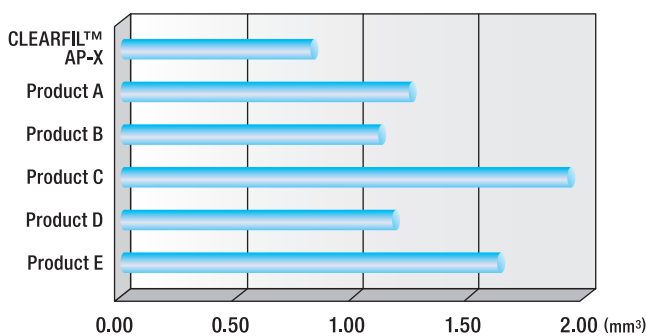
► Exceptional physical property

Volumetric shrinkage



► Low polymerization shrinkage

Wear resistance : CR side



► High wear resistance

Sources: Kuraray Noritake Dental Inc.

Items

- #1721WD CLEARFIL™ AP-X (A2)
- #1722WD CLEARFIL™ AP-X (A3)
- #1723WD CLEARFIL™ AP-X (A3.5)
- #1724WD CLEARFIL™ AP-X (A4)
- #1725WD CLEARFIL™ AP-X (B2)
- #1726WD CLEARFIL™ AP-X (B3)
- #1727WD CLEARFIL™ AP-X (B4)
- #1728WD CLEARFIL™ AP-X (C2)
- #1729WD CLEARFIL™ AP-X (C3)
- #1730WD CLEARFIL™ AP-X (C4)
- #1731WD CLEARFIL™ AP-X (XL)

Clinical Indication

Class I, II, V
restorations of posterior

Class III, IV, V
restorations of anterior teeth

Cervical cavities or
root surfaces defects

RELATED PRODUCTS

CLEARFIL™ SE Bond

- 2 step of Light-curing, self-etching bonding agen



CLEARFIL™ S³ Bond

- 1 step of Light-curing, self-etching bonding agent



CLEARFIL™ AP-X Esthetics

- Light-curing restorative composite resin




CLEARFIL™ AP-X Flow

- Flowable, radiopaque restorative composite resin



- Read the Instruction for Use supplied with the product before use.
- The measurement data contained in this brochure are obtained by the results of tests performed by Kuraray Noritake Dental Inc.
- The colors of the product pastes and hardened products shown in this brochure may vary from the actual colors.
- The specifications and appearance of the product are subject to change without notice.

 Kuraray Noritake Dental Inc.

Ote Center Bldg.

1-1-3, Otemachi, Chiyoda-Ku, Tokyo 100-0004, Japan

Website : <http://www.kuraraynoritake.com>