



EcuSphere

A high-quality universal
composite system.

DMG
Chemisch-Pharmazeutische Fabrik GmbH
Elbgaustraße 248 22547 Hamburg Germany
For: +49. (0) 40.84006-0 Fax: +49. (0) 40.84006-222
info@dmg-dental.com www.dmg-dental.com
www.facebook.com/dmgdental



A high-quality universal composite system.

Reliable, user-friendly and highly esthetic – the EcuSphere system satisfies all the requirements placed on a high-quality composite.

This composite line is characterized by the wide range of materials and by the large selection of shades with natural fluorescence. EcuSphere products facilitate long-lasting restorations, combining economic efficiency with superior esthetics.

The system consists of four different composites – EcuSphere-Carat, EcuSphere-Shape, EcuSphere-Shine, and the light flow EcuSphere-Flow – all specially developed for specific applications.

ECUSPHERE-SYSTEM

System-based layer technique

All EcuSphere products are optimally attuned to one another with regard to their material properties and complement each other well in order to obtain best results with the least amount of effort.

Consistencies and shades can be easily combined for the layer technique. Long-lasting restorations with a natural appearance are the result of your professional skill.

COMPATIBILITY WITH OTHER DMG PRODUCTS

Contax	Reliable self-etch bonding system Secure, lasting adhesion to dentine and enamel User-friendly application
TECO	Reliable adhesion to hard tissue: 38 MPa* User-friendly total-etch technique Available as innovative »SilvR dose« single application or one-component variant
Ionosit-Baseliner	Flowable, light-curing lining material Controlled expansion to compensate for volume shrinkage Reduces post-operative sensitivities

*Burgess, J.O.: »Comparison of Microtensile Bond Strength of different 5th Generation Bonding Systems«, University of Alabama, Birmingham UAB, USA, 2007, data on file (DMG)

SYSTEM-BASED LAYER TECHNIQUE



Reproducing the palatal surface with EcuSphere-Shine Transparent.



Modeling the cervical dentine core with EcuSphere-Flow A4.



Complementing the dentine core with EcuSphere-Shape D-A3.



Labial enamel replacement with EcuSphere-Shine Transparent using the lifelike layer technique.

FOR ALL CAVITY CLASSES



Initial situation – cavity class III.



Reconstruction with EcuSphere-Shape A3.



Initial situation – cavity class I.



Reconstruction with EcuSphere-Shape A3.5.

ECUSPHERE-SHAPE

For all cavity classes

EcuSphere-Shape is a reliable universal composite for all cavity classes and is an excellent partner for EcuSphere-Shine. Outstanding mechanical properties, such as high compression strength and abrasion resistance, combined with user-friendly processing features make EcuSphere-Shape a modern restorative material.

Combined with EcuSphere-Shine, EcuSphere-Shape becomes an important component of highly esthetic restorations. The large selection of 11 VITA® shades, an opaque material, and the possibility of combining it with three different transparent enamel replacement materials facilitate restorations with a lifelike appearance.

FEATURES	BENEFITS
Comprehensive shade selection based on VITA®	Easy and reliable color selection
Flexible handling	Single-color layer technique Multi-color layer technique Can be combined with EcuSphere-Shine
Perfect mechanical properties	High strength Long-lasting, fully functional restorations

ECUSPHERE-SHINE

The perfect symbiosis

The combination of EcuSphere-Shape and EcuSphere-Shine is the perfect symbiosis for highly esthetic restorations in the anterior region. EcuSphere-Shine blends well with the smooth enamel surface and impresses with long-lasting, flawless results.

The material properties of EcuSphere-Shine are perfectly tailored for a combined application with EcuSphere-Shape. EcuSphere-Shape allows for a precise reconstruction of the dentine core, and the enamel core can be restored with EcuSphere-Shine. The composite's excellent translucency produces a chameleon effect. This is supported by the absolutely perfect polishability of EcuSphere-Shine, which also facilitates a flawless transition to the enamel. Therefore, the material is also well-suited for the direct veneer technique. With its malleable consistency, EcuSphere-Shine is very pleasant to work with.

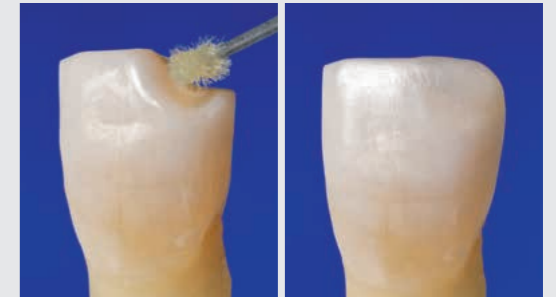
Thanks to the integrated filler technique »IFT«, EcuSphere-Shine combines reliable mechanical properties with superlative esthetic results.

FEATURES	BENEFITS
Shades with chameleon effect	Esthetic, invisible restorations
Excellent sculpting properties	Detailed reproduction of the enamel
Excellent polishability	Superior esthetic appearance Reduction of plaque deposits
Flexible handling	Single-color layer technique Multi-color layer technique Can be combined with EcuSphere-Shape

THE PERFECT SYMBIOSIS



Initial situation: incisal edge fracture.



Bonding the smoothed fracture edges.

Reconstruction with EcuSphere-Shape A2.



Initial situation: deep, brownish discoloration limited to the enamel.

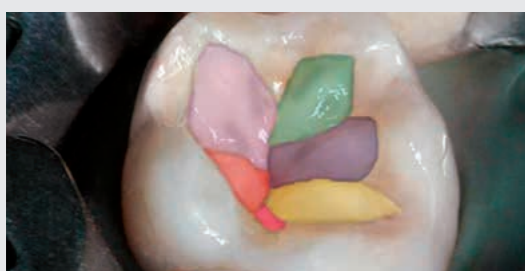


Final result: cavity class V restoration with EcuSphere-Shine Transparent.

SPECIALLY FOR AREAS WITH HIGH CHEWING LOADS



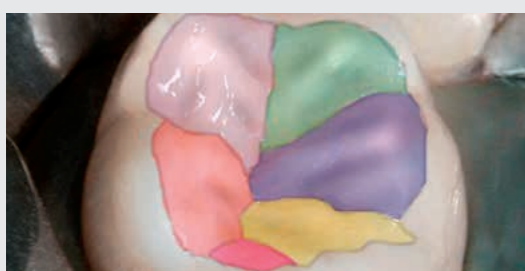
Initial situation. Final result with EcuSphere-Carat A3.5.



Planning the reconstruction of a fully functional chewing surface, step 1.



First increments in the reconstruction process for a fully functional chewing surface.



Planning the reconstruction of a fully functional chewing surface, step 2.

ECUSPHERE-CARAT

Specially for areas with high chewing loads

Specially developed for areas with high chewing loads, EcuSphere-Carat fulfills the highest requirements with regard to both its mechanical material properties and its processing parameters.

Highly viscous, tampable, and non-adherent, EcuSphere-Carat is very pleasant to work with; a fact that was confirmed by 83 % of the participants in a survey among practicing dentists.

Besides the material's outstanding adaptation capacity, EcuSphere-Carat is very easy to form. Precisely-adjusted abrasion parameters prevent damage to antagonists.

FEATURES	BENEFITS
User-friendly handling	Does not stick to the instrument Good adaptation to cavity walls Excellent stability
Perfect mechanical properties	No antagonist abrasion High stability, tampable Long-lasting, fully functional restorations

GOOD REASONS:

- > Restoration system for all cavity classes
- > Optimal shade selection based on VITA®
- > Lasting esthetics
- > Wide range of materials
- > Convincing handling features
- > Excellent sculpting properties



PRODUCT OVERVIEW

EcuSphere-Shape		Package: 1 Syringe @ 4.5 g				
Shade A1	REF 220375	Shade B1	REF 220379	Shade C3	REF 220445	
Shade A2	REF 220376	Shade B2	REF 220380	Shade D2	REF 220446	
Shade A3	REF 220377	Shade B3	REF 220442	Shade D-A2	REF 220447	
Shade A3.5	REF 220378	Shade C1	REF 220443	Shade D-A3	REF 220448	
Shade A4	REF 220441	Shade C2	REF 220444			
EcuSphere-Shine		Package: 1 Syringe @ 4.5 g				
Shade transparente	REF 220368	Shade A2	REF 220366			
Shade A1	REF 220440	Shade A3	REF 220367			
EcuSphere-Carat		Package: 1 Syringe @ 4.5 g				
Shade A1	REF 220359	Shade A3	REF 220361			
Shade A2	REF 220360	Shade A3.5	REF 220362			
EcuSphere-Flow		Package: 2 Syringes @ 2 g, 10 Luer-Lock-Tips				
Shade A1	REF 220315	Shade A3.5	REF 220312	Shade B2	REF 220453	
Shade A2	REF 220314	Shade A4	REF 213123	Shade C2	REF 220454	
Shade A	REF 220313	Shade B1	REF 213124			