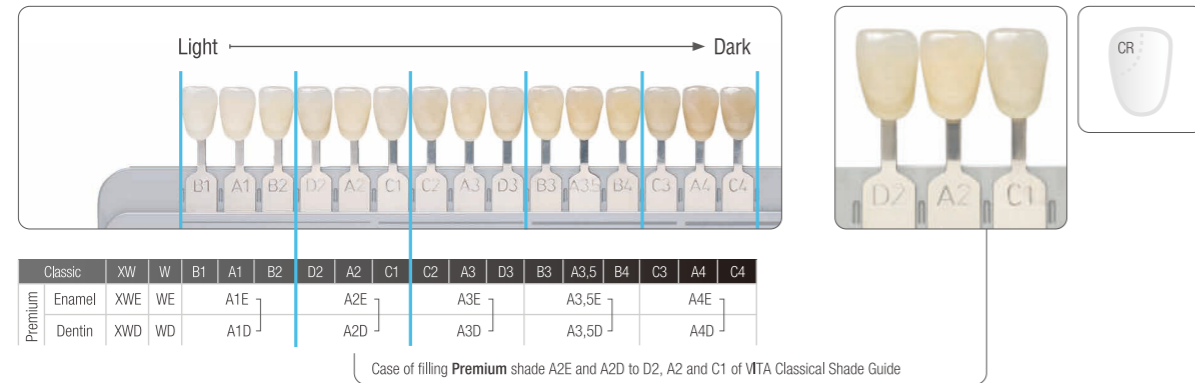


PREMIUM: DUAL-SHADE TECHNIQUE BY VITA APPROVED CONCEPT WITH IMPRESSIVE SHADE COVERAGE

In addition to the Classic system, Premium system is available for dual-shade technique. It's hard to believe, but with our esthetic composite concept you are also able to cover three VITA™ shades with just one Premium enamel and dentin shade combination, such as A1E and A1D. This is possible due to the creation of brightness based shade groups based on three shades. And you do not need any complicated shade recipe to make it happen. Just copy nature's two layers.

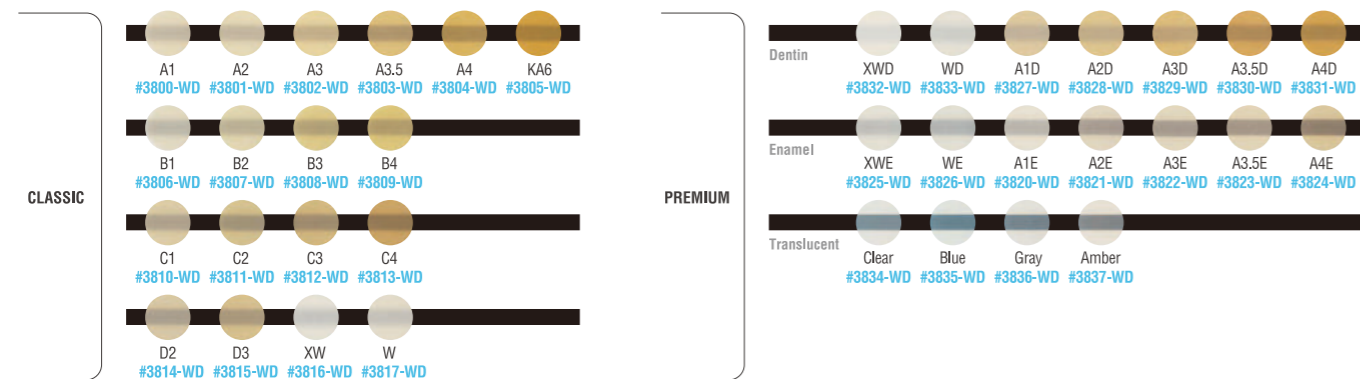


CASE STUDY FILLED WITH PREMIUM SYSTEM



Pictures courtesy of Dr. Hirofumi Tashiro

SHADES



All refill syringes are 3.6 g / 2.0 ml except PREMIUM Translucent shades Clear, Amber, Blue and Gray. PREMIUM Translucent shades Clear, Amber, Blue and Gray are 1.8 g / 0.9 ml.

Kit

#3790-WD ES-2 SYRINGE PROFESSIONAL KIT
Classic A1, A2, A3, A3.5 Premium A1E, A2E, A3E, A3.5E, A1D, A2D, A3D, A3.5D: 1 syringe per shade (3,6 g / 2,0 ml) + Clear, Amber, Blue, Gray 1 syringe per shade (1,8 g / 0,9 ml) + Shade Guide

#3792-WD ES-2 SYRINGE INTRODUCTORY KIT
Classic A2, Premium A2D, A2E: 1 syringe per shade (1,2 g / 0,7 ml)

Shade Guide

#3840-WD SHADE GUIDE *All Shades
#3841-WD SHADE GUIDE COMPACT
A1, A2, A3, A3.5, A4, B1, B2, B3, B4, C1, C2, C3, C4, D2, D3, XW, W

- Before using this product, be sure to read the Instructions for Use supplied with the product.
- The specifications and appearance of the product are subject to change without notice.
- Printed color can be slightly different from actual color.

*"CLEARFIL" is a trademark of KURARAY CO., LTD

Kuraray Noritake Dental Inc.
1621 Sakazu, Kurashiki, Okayama 710-0801, Japan
Website www.kuraraynoritake.com

CLEARFIL™ AP-X ES-2

JUST BLENDING INTO NATURE

VITA APPROVED SHADE CONCEPT



CLEARFIL™ AP-X ES-2

CLEARFIL™ AP-X ES-2 is a nano-hybrid composite that provides accurate color matching, high polishability and excellent physical properties, making it ideal for anterior and posterior use. It is formulated with optimal viscosity, assuring easy handling and placement.

The “brightness /value”-based unique shade taking system provides shade taking options for single (Classic) and dual (Premium) shade layering for highly esthetic restorations.

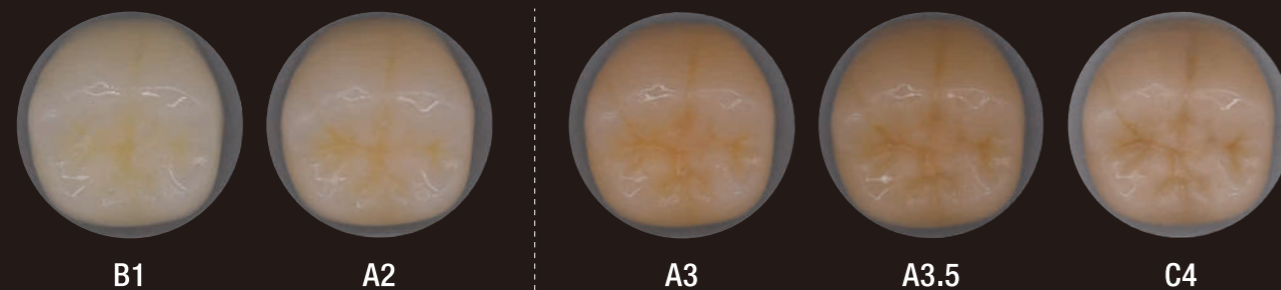


LIGHT DIFFUSION: EXCELLENT COLOR ADAPTABILITY AND BLENDING

With its unique Light Diffusion property, CLEARFIL™ AP-X ES-2 reproduces the natural diffusive properties of tooth structure. This property diffuses light in all directions emulating the natural teeth and resulting in a natural shade blending of the surrounding structures, highly esthetic restorations and excellent color adaptability.

CLEARFIL™ AP-X ES-2 Classic A2 and A3 shades:
Matching the 16 VITA Classical shades in class I cavities

Acrylic Resin Teeth Shade



Acrylic Resin Teeth Shade

A2 for matching B1, A1, B2, D2, A2, C1, C2

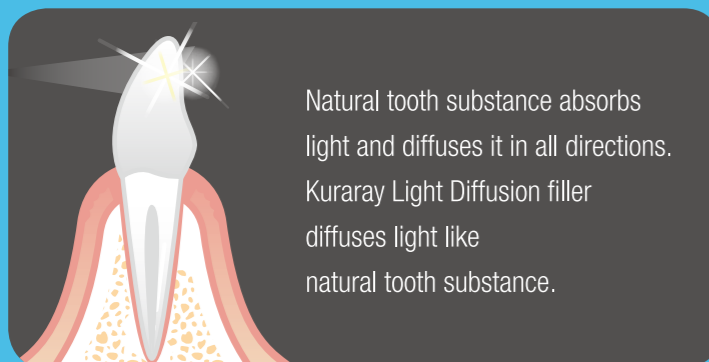
A3 for matching D4, A3, D3, B3, A3.5, B4, C3, A4, C4

Test conditions: tapered round cavities 4 mm in diameter and 2 mm in depth were prepared on acrylic resin teeth and were all filled with the A2 and A3 shade of CLEARFIL™ AP-X ES-2. For wider cavities or more esthetic demanding situations, 18 shades are available.

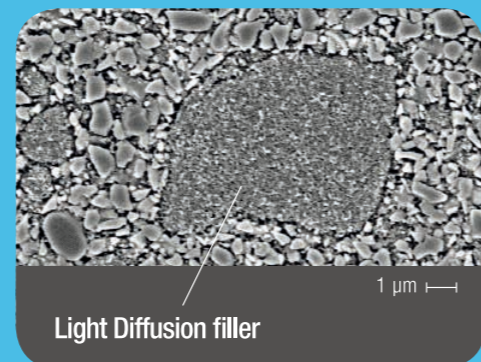
Data source: Kuraray Noritake Dental Inc.

A “MARRIAGE” OF COMPOSITE AND NATURE

Light Diffusion adapts hue and color saturation to the surrounding tooth tissue. This technology makes it possible to get very close to natural dentin and enamel light effects.



Natural tooth substance absorbs light and diffuses it in all directions. Kuraray Light Diffusion filler diffuses light like natural tooth substance.

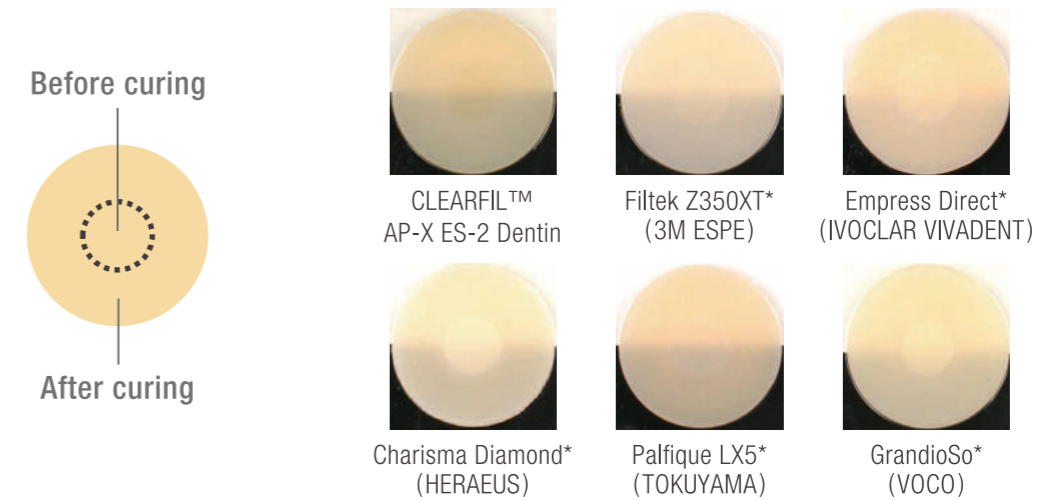


Light Diffusion filler

Source: Dr. Toshimoto Yamada, DDS, PhD, Toranomon Hospital, Japan.

VIRTUALLY NO POST-CURE TRANSPARENCY CHANGE

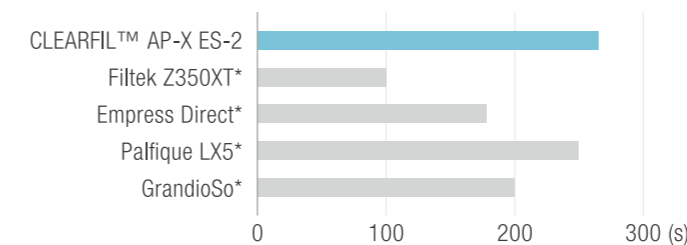
The shades of CLEARFIL™ AP-X ES-2 stay virtually the same before and after polymerization. Below is a comparison of various composites where the sample discs were cured along the edges and the center left uncured. Notice the lack of shade-shift when using CLEARFIL™ AP-X ES-2.



LONG WORKING TIME UNDER AMBIENT LIGHT

CLEARFIL™ AP-X ES-2 has a very long working time of 4.5 minutes under ambient lighting. Even if you keep your operating light on the restoration, you will have enough time to layer the paste.

Working Time Under Ambient Light



*Not a trademark of Kuraray Co., Ltd
(Source: Kuraray Noritake Dental Inc.)

Xenon Light 8000x
(ISO4049:2009)

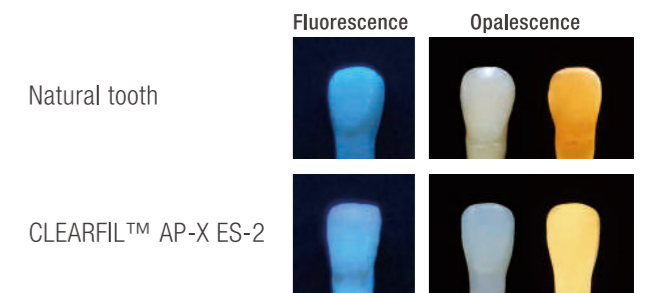
BUILT-IN SHADE TECHNOLOGIES

Natural fluorescence

Natural fluorescence light effects are included.

Natural opalescence

Our Translucent shades, Clear, Amber, Blue and Grey, show nice opalescent effects. They help you to characterize your restorations at an advanced level.



CASE STUDY FILLED WITH CLASSIC SYSTEM



Example of Class III restorations filled with CLEARFIL™ AP-X ES-2 with excellent blending results.



Pictures courtesy of Dr. Hirofumi Tashiro