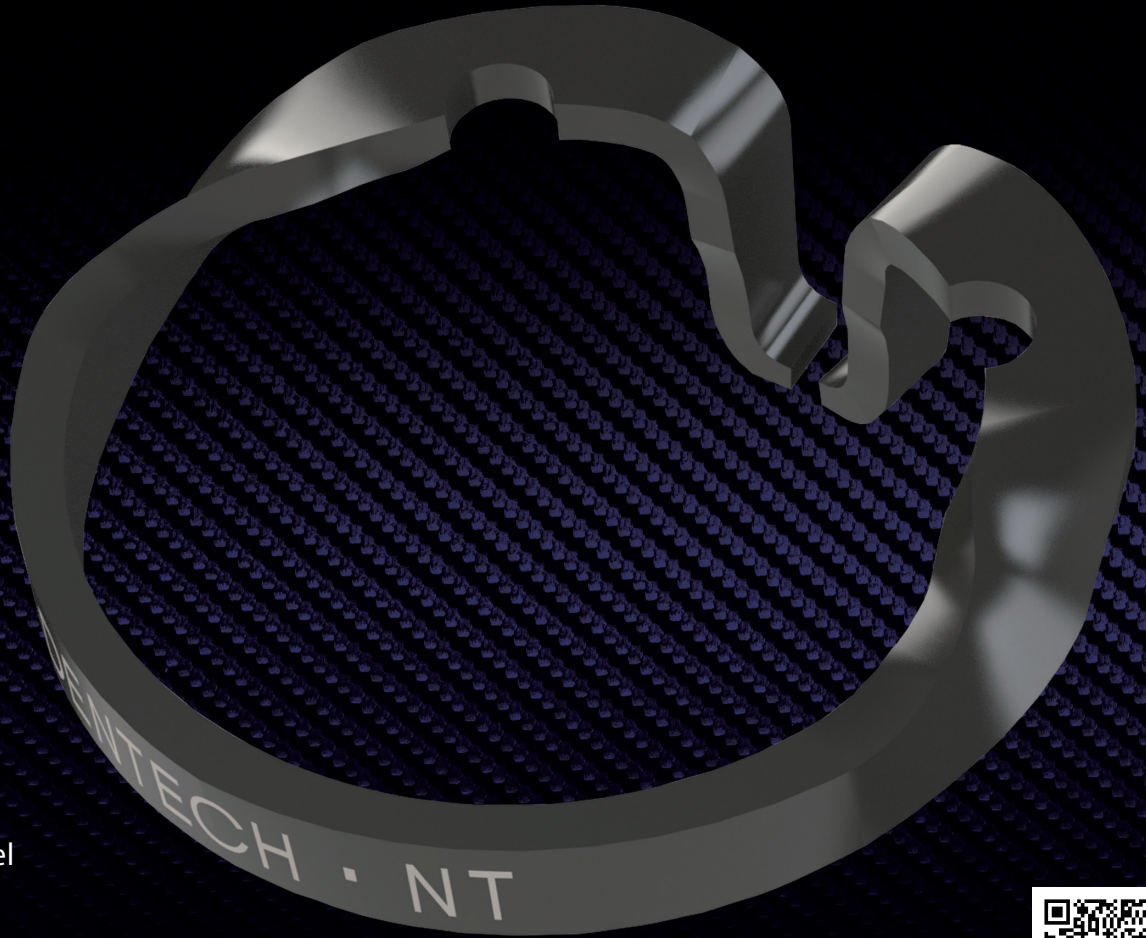


KSK SECTIONAL MATRIX RING

- ✓ Rings used to hold the matrix in right place on the teeth.
- ✓ Simple nail design works with a variety of teeth.
- ✓ Available with your clamp forceps.
✧ Compatibility with KSK clamp forceps is guaranteed.
- ✓ Spring force is just right and easy to adjust.



Co-developers: Dr. Noboru Takahashi
Director of Takahashi Dental Office
Clinical Lecturer of Tokyo Medical
and Dental University



Specification

Color : Black

Autoclavable

Material : Stainless Steel

Made In Japan



KSK Sectional Matrix Rings 2 pcs

Product Code : 06000010

KSK Sectional Matrix Rings set with Forceps

Product Code : 06000020



Specification and Appearance are subject to change without prior notice for product improvement.

Manufacturer : DENTECH CORPORATION



53-5, Shimizu-cho, Itabashi-ku, Tokyo, 174-0053 Japan
TEL : (+81)-3-3964-2011 FAX : (+81)-3-3962-5624
Info@dentech.co.jp www.dentech.co.jp

