

PRESERVING DENTIN IN ITS NATURAL HABITAT? CHALLENGE ACCEPTED.



Shaping • Cleaning • Obturation

TruNatomy®

SAFEGUARD THE ROOT CANAL'S NATURAL ANATOMY WITH TRUNATOMY®

When performing root canals, without preservation, much can be lost. Dentsply Sirona TruNatomy® treatment solution helps safeguard the natural anatomy of the root canal system. Specially designed to maintain structural dentin and tooth integrity, TruNatomy® ensures sufficient room for cleaning and disinfecting using the dedicated irrigation needle and the SmartLite Pro EndoActivator™ - bringing next-level care to patients.

Unlock next-level care across the entire workflow.



SHAPING

Why should you remove more when you can preserve? A unique combination of features enables efficient root canal treatment while removing dentin only where needed.¹



CLEANING

The irrigation needle as well as the EndoActivator® are designed to provide enhanced cleaning.



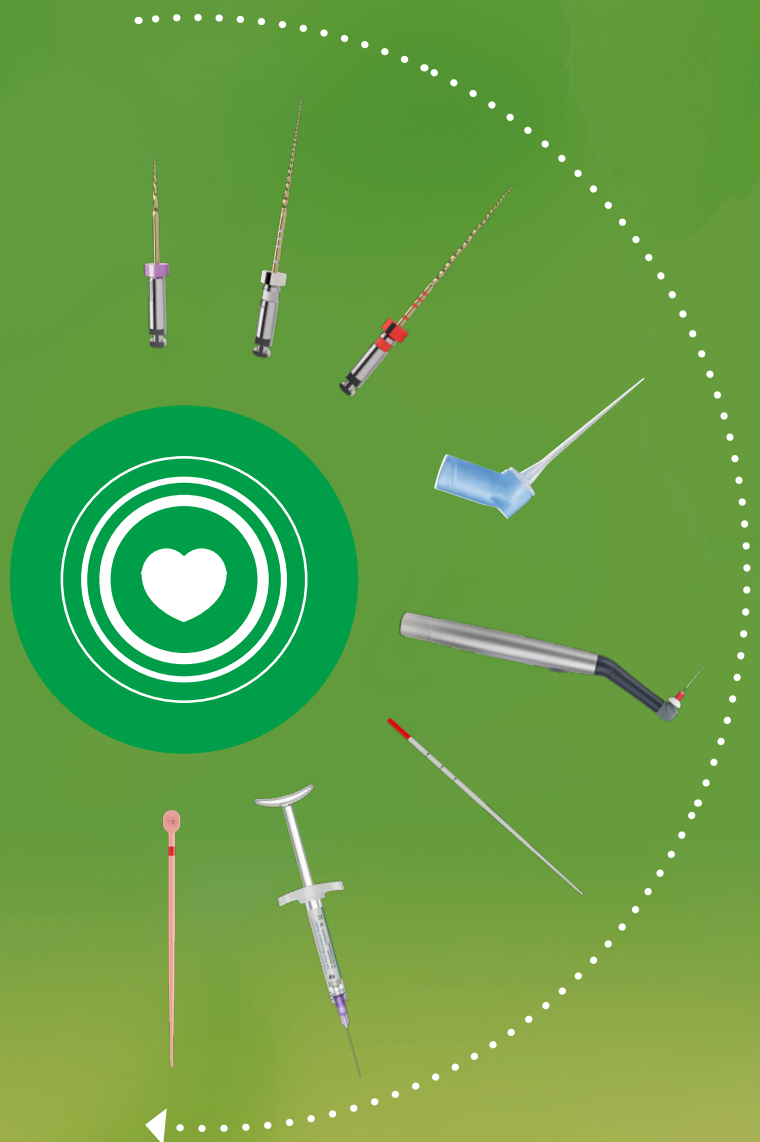
OBTURATION

Gain confidence in your obturation with a sealer that creates an ideal environment for healing and Conform Fit® Gutta-Percha Points, designed to match the precise shapes created by the files.



RESTORATION

Facing every step with confidence with Dentsply Sirona restorative materials.



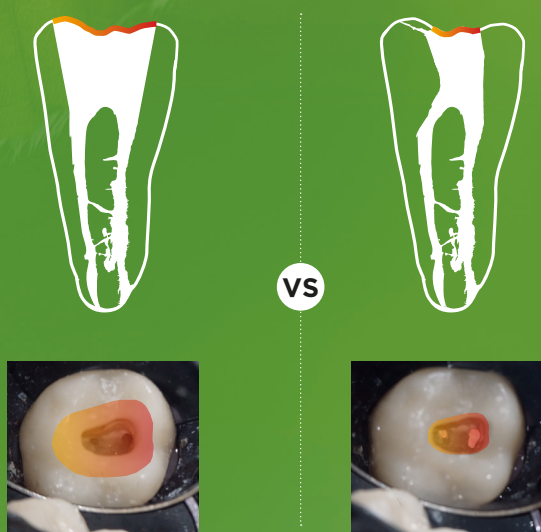
Use this QR code to access scientific data

SHAPING

CHALLENGE:

PRESERVING STRUCTURAL STRENGTH.

Why dentin preservation? Research has shown that instrumentation can compromise the strength of the tooth — but strength is restored when more dentin is saved.² Part of saving more teeth is saving more tooth.

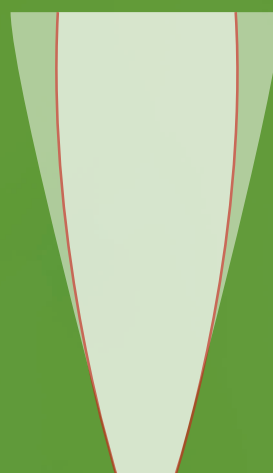


Efficiency with less dentin removal

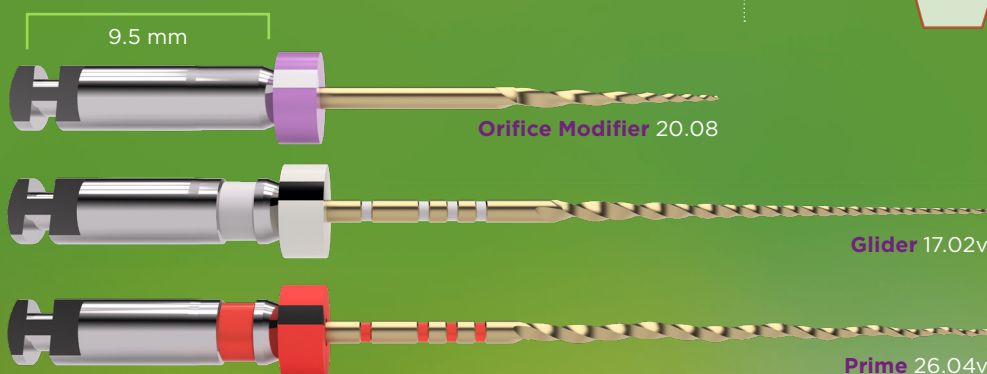
- A combination of dedicated heat-treated NITI with a 0.8 mm wire to better respect the root canal.⁴
- Patented off-centered cross section shaping files with regressive taper for superior efficiency.⁵
- Preserve dentin from small to large anatomies thanks to the available sizes

No need for conventional straight line access

- TruNatomy® Orifice Modifier shapes the orifice to create the entry point without straight line access.³
- TruNatomy® preserves dentin in the peri-cervical area while ensuring sufficient apical debriedment.³



- TruNatomy® Prime
- Generic progressive tapered file



All files operate at 500 rpm & 1.5 Ncm

2. Sedgley CM, Messer HH. Are endodontically treated teeth more brittle? J Endod. 1992 Jul;18(7):332-5
3. Internal data on file. For more information, contact Consumables-Data-Requests@dentsplysirona.com
4. Versus up to 1.2 mm for most generic variable tapered files
5. Versus progressive taper design

CLEANING

CHALLENGE:

EFFICIENT DISINFECTION TO THE APEX.



IRRIGATION NEEDLE



Flexible

- The irrigation needle features a flexible body for apical access with no resistance or damage to dentinal walls.³
- Soft polypropylene material delivers irrigation solutions close to the apex.³



Effective

- Back-to-back two-sided vent design maintains balance irrigation throughout canal. Aimed directly at the dentinal wall.³



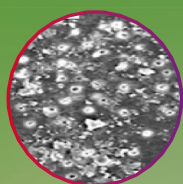
ENDOACTIVATOR®

More opened dentinal tubules

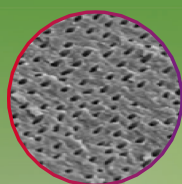
- Passive soaks aren't enough. Activating irrigants can help produce a surface with more opened dentinal tubules, allowing for better obturation of lateral and accessory canals.⁶

SmartLite Pro EndoActivator™

COMING
SOON



Unactivated
dentin surface



After irrigant
activation



6. Kanter V, Weldon E, Nair U, et al. A quantitative and qualitative analysis of ultrasonic versus sonic endodontic systems on canal cleanliness and obturation. Oral Surg Oral Med Oral Pathol Oral Radiol Endod. 2011;112(6):809-813. doi:10.1016/j.tripleo.2011.06.002

OBTURATION

CHALLENGE:

OPTIMAL PERFORMANCE IN SMALLER SHAPES.

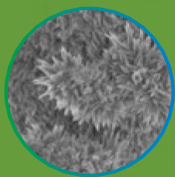
AH PLUS® BIOCERAMIC SEALER

Self healing

- Bioactive seal creates ideal environment to produce HA and promote healing.³
- Provides a high pH for antimicrobial effect that promotes an osteogenic response.⁷

Gap-free bonding

- Sealer produces a wide range of hydroxyapatite crystals within dentinal tubules for gap-free bond between canal wall and gutta-percha.³



Hydroxyapatite

Triple Lock™
your obturation



CONFORM FIT® GUTTA-PERCHA POINT



Precise

- Variable tapered to match the shapes created by TruNatomy® files.
- Precise fit for the right tug back.
- 40% more accurate than traditional hand-rolled gutta percha.⁸



Safe

No natural rubber latex offers safety for patients with latex allergies.

7. Holt DM et al. "The anti-microbial effect against enterococcus faecalis and the compressive strength of two types of mineral trioxide aggregate mixed with sterile water or 2% chlorhexidine liquid." J Endod. 2007 Jul;33(7):844-7


8. Peters, O. A., K. Schonenberger, and A. Laib. "Effects of Four Ni-Ti Preparation Techniques on Root Canal Geometry Assessed by Micro Computed Tomography." International Endodontic Journal Int Endod J 34.3 (2001): 221-30


TruNatomy®


Product References


TruNatomy® Orifice Modifier (20.08)		
	3 x 16 mm	B ST TNMY 316 OMD
	6 x 16 mm	B ST TNMY 616 OMD

TruNatomy® Glider (17.02v)		
	3 x 21 mm	B ST TNMY 321 GLR
	3 x 25 mm	B ST TNMY 325 GLR
	3 x 31 mm	B ST TNMY 331 GLR
	6 x 21 mm	B ST TNMY 621 GLR
	6 x 25 mm	B ST TNMY 625 GLR
	6 x 31 mm	B ST TNMY 631 GLR




TruNatomy® Shaping File - Small (20.04v)		
	3 x 21 mm	B ST TNMY 321 SML
	3 x 25 mm	B ST TNMY 325 SML
	3 x 31 mm	B ST TNMY 331 SML
	6 x 21 mm	B ST TNMY 621 SML
	6 x 25 mm	B ST TNMY 625 SML
	6 x 31 mm	B ST TNMY 631 SML







TruNatomy® Shaping File - Prime (26.04v)		
	3 x 21 mm	B ST TNMY 321 PRM
	3 x 25 mm	B ST TNMY 325 PRM
	3 x 31 mm	B ST TNMY 331 PRM
	6 x 21 mm	B ST TNMY 621 PRM
	6 x 25 mm	B ST TNMY 625 PRM
	6 x 31 mm	B ST TNMY 631 PRM


TruNatomy® Shaping File - Medium (36.03v)		
	3 x 21 mm	B ST TNMY 321 MED
	3 x 25 mm	B ST TNMY 325 MED
	3 x 31 mm	B ST TNMY 331 MED
	6 x 21 mm	B ST TNMY 621 MED
	6 x 25 mm	B ST TNMY 625 MED
	6 x 31 mm	B ST TNMY 631 MED





TruNatomy® Shaping File - Large (46.02v)		
	3 x 21 mm	B ST TNMY 321 LRG
	3 x 25 mm	B ST TNMY 325 LRG
	3 x 31 mm	B ST TNMY 331 LRG
	6 x 21 mm	B ST TNMY 621 LRG
	6 x 25 mm	B ST TNMY 625 LRG
	6 x 31 mm	B ST TNMY 631 LRG




TruNatomy® Sequence		
	3 x 21 mm	B ST TNMY 321 SQC
	3 x 25 mm	B ST TNMY 325 SQC
	3 x 31 mm	B ST TNMY 331 SQC

TruNatomy® Assortment		
	5 x 21 mm	B ST TNMY 521 AST
	5 x 25 mm	B ST TNMY 525 AST
	5 x 31 mm	B ST TNMY 531 AST
	6 x 21 mm	B ST TNMY 621 AST (with Large size)
	6 x 25 mm	B ST TNMY 625 AST (with Large size)
	6 x 31 mm	B ST TNMY 631 AST (with Large size)


Irrigation Needle		
	x40	B NS DSIN D22 30G 30 Gauge
	x5	B NS DSIN 522 30G 30 Gauge


TruNatomy® Absorbent Points		
	x180	B ST TNPP 000 SML Small
	x180	B ST TNPP 000 PRM Prime
	x180	B ST TNPP 000 MED Medium
	x180	B ST TNPP 000 LRG Large
	x180	B ST TNPP 000 AST Assortment
	x180	B ST TNPP 000 AS4 Assortment (4 sizes)


TruNatomy® Conform Fit® Gutta-Percha Obturation Points		
	x60	B 00 TNGP F00 SML Small
	x60	B 00 TNGP F00 PRM Prime
	x60	B 00 TNGP F00 MED Medium
	x60	B 00 TNGP F00 LRG Large
	x60	B 00 TNGP F00 AST Assortment
	x60	B 00 TNGP F00 AS4 Assortment (4 sizes)

TruNatomy® Treatment Solution Kit		
	B 00 TNMY TS0 KIT	
4	TruNatomy® Sequence	3-Files 25 mm
2	TruNatomy® Orifice Modifier	3- Files 16 mm
2	TruNatomy® Glider	3- Files 25 mm
2	TruNatomy® Small	3- Files 25 mm
2	TruNatomy® Prime	3- Files 25 mm
2	TruNatomy® Medium	3- Files 25 mm
1	TruNatomy® Absorbent Points Assortment	
1	TruNatomy® Conform Fit® Assortment	
2	Irrigation Needle (5 units)	

AH Plus® Bioceramic Sealer		
	B KT AHBS 000 000	Starter Kit
	B 00 AHBS 100 03G	Syringe Refill
	B 00 AHBS 020 24G	Cannula Refill

SmartLite® Pro EndoActivator		
	644431	Complete kit
	644432	Refill kit
	644434	100 Barrier Sleeves
	644435	25 Tips Small (15/02) 22 mm
	644437	25 Tips Medium Long (25/04) 28 mm
	644438	Attachment

	
Files	Maillefer Instruments Holding Sàrl Chemin du Verger 3, CH-1338 Ballaigues
Gutta-Percha & Absorbent Points	Dentsply Tulsa Dental Specialties 608 Rolling Hills Drive, Johnson City, TN 37604
Irrigation Needle	Produits Dentaires SA, Rue des Bosquets 18, CH-1800 Vevey
AH Plus® Bioceramic Sealer	Maruchi, 2-208, Medical Industry Complex Bldg., 42-10, Taejanggongdan-gil, Wonju-si, Gangwon-do, KR-26311

	
Dentsply DeTrey GmbH De-Trey-Straße 1, D-78467, Konstanz	2797
Dentsply DeTrey GmbH De-Trey-Straße 1, D-78467, Konstanz	2797
PD Dental EU 74200 Thonon-les-Bains, France	1639
KTR Europe GmbH, Mergenthalerallee 77, D-65760 Eschborn	0197

