

# ACHIEVING ZEN DURING A ROOT CANAL? CHALLENGE ACCEPTED.



Shaping • Cleaning • Obturation

WaveOne® Gold

# EXPERIENCE THE CALMING CONFIDENCE OF WAVEONE® GOLD

Root canals can be challenging. But the WaveOne® Gold treatment solution has everything you need to approach your next case with calmness and tranquility. The result? An endodontic treatment that is a simpler (and more profitable) part of your practice. So go ahead – take on the next root canal case with confidence.

A comprehensive treatment solution in 3 simple steps.



## SHAPING

Safe shaping in half the time.<sup>1</sup> A short sequence for most of your cases including 1 glidepath and 1 shaping file. Crafted to be more forgiving, due to reciprocating motion and gold heat treatment.<sup>2</sup>



## CLEANING

Efficient cleaning. That's what the irrigation needle as well as the EndoActivator® are designed for.



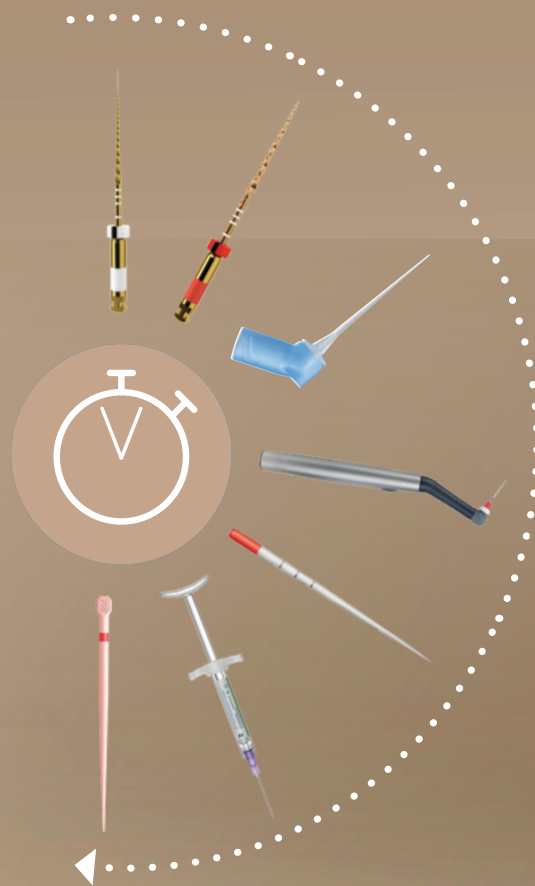
## OBTURATION

Biocompatible seal and optimal fit. No matter if you prefer a warm or cold obturation technique our biocompatible Bioceramic Sealer supports both. Enjoy the ease with Conform Fit® GuttaPercha (cold) or GuttaCore® (warm).



## DS MOTORS

Because every angle, every acceleration, every speed matters to deliver the best, our motors provide the genuine reciprocating movement for WaveOne® Gold.



1. vs. ProTaper® Universal  
2. vs. conventional systems





# SHAPING

CHALLENGE:

## SAFE SHAPING IN HALF THE TIME.<sup>1</sup>



**One short sequence  
for most of your cases<sup>2</sup>**



**Simple to use and easy to adopt**

- Short learning curve<sup>3</sup>
- Good control of instrument progression<sup>4</sup>



**Time-saving**

- Halves shaping time<sup>1</sup>
- Zeros out reprocessing & documentation
- Optimal cutting efficiency<sup>5</sup>



**Safety. A priority.**

- Forgiving due to reciprocating motion and gold heat treatment
- Up to 200 scientific studies
- More than 30 million treated cases

WaveOne® Gold  
Glider

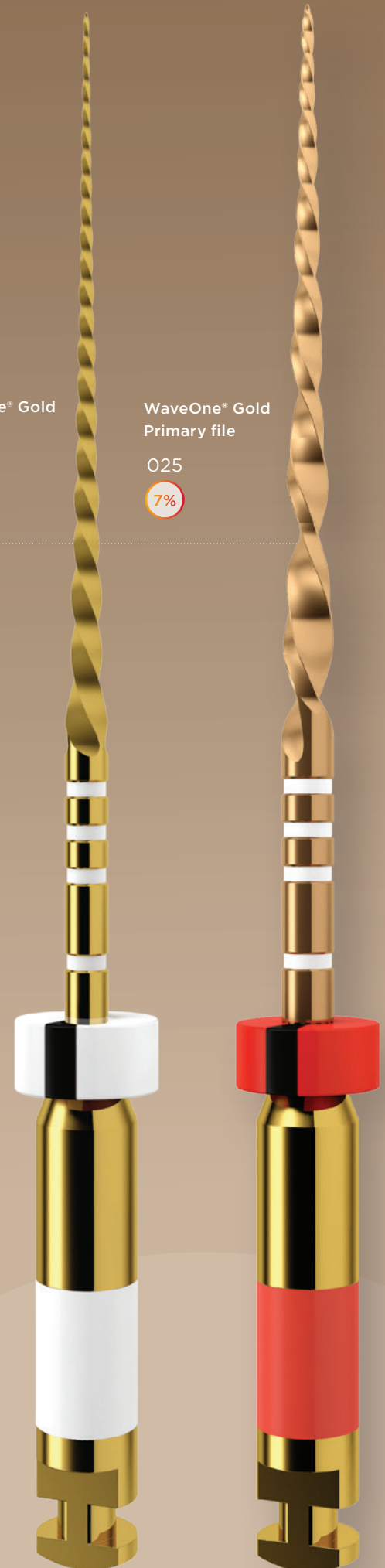
015

2%

WaveOne® Gold  
Primary file

025

7%



BUILDING ON  
**MAILLEFER**  
HERITAGE

1. vs. ProTaper Universal

2. Single glide path file and single shaping file in most of the cases

3. User evaluation

4. vs. WaveOne

5. Higher cutting efficiency than WaveOne and cutting efficiency preserved thanks to single-use

# CLEANING

CHALLENGE:  
**EFFICIENT  
CLEANING.**

## IRRIGATION NEEDLE



### Efficient

- Advanced technology with two lateral openings aimed directly at the dentinal walls
- Soft polypropylene allows the needle to curve and to deliver irrigation solution close to the apex



### Safe

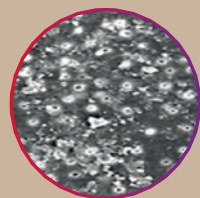
- Closed end reduces risk of extrusion at the apex
- Plastic body makes it atraumatic for hard tissues



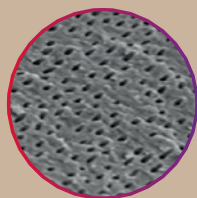
## ENDOACTIVATOR®

### More opened dentinal tubules

Passive soaks aren't enough. Activating irrigant solution produces a surface with more opened dentinal tubules, providing better obturation of lateral and accessory canals.<sup>6</sup>



Unactivated  
dentin surface



After irrigant  
activation

### SmartLite Pro EndoActivator™

- Following the protocol provides more than 150 times higher bacteria reduction vs. 1 minute bleach soak.<sup>7</sup>



6. A quantitative and qualitative analysis of ultrasonic versus sonic endodontic systems on canal cleanliness and obturation Valerie Kanter, DMD, Emily Weldon, DMD, Uma Nair, DMD, MDS, Claudio Varella, DDS, MS, Keith Kanter, DDS, Kenneth Anusavice, PhD, and Roberta Pileggi, DDS, MS, Gainesville, FL UNIVERSITY OF FLORIDA. (Oral Surg Oral Med Oral Pathol Oral Radiol Endod 2011;112:809-813). Support Claim 4.



# OBTURATION

CHALLENGE:  
**BIOCOMPATIBLE SEAL  
AND OPTIMAL FIT.**

## AH PLUS® BIOCERAMIC SEALER



### Biocompatible

Providing an ideal environment for Hydroxyapatite formation paving the way for the body's self healing.<sup>7</sup>



### Adapting to your preference

Compatible with cold and warm obturation techniques.



### Cold Obturation

## CONFORM FIT® GUTTA-PERCHA

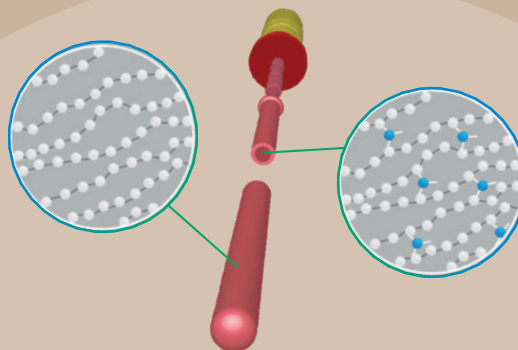
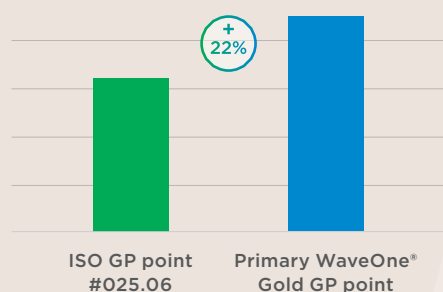
- Take advantage of the unsurpassed fit of the injection-moulded Conform Fit® Gutta-Percha points that match the unique shapes created by our WaveOne® Gold files.<sup>7</sup>
- Convenient tab and color markings for easy identification.

### Warm Obturation

## GUTTACORE®

- The confidence of a 3D fill, with the ease of a single insertion.
- Our obturators feature a cross-linked Gutta-percha core that sends the surrounding warm, flowable gutta-percha three-dimensionally to follow the natural canal anatomy.

Superior apical gutta-percha point filling volume<sup>7</sup>




<sup>7</sup> Internal data on file. For more information, contact [Consumables-Data-Requests@dentsplysirona.com](mailto:Consumables-Data-Requests@dentsplysirona.com)

# WaveOne® Gold

## Product References

### WaveOne® Gold Reciprocating Glide Path File

#### Glider – 015, 02 variable taper


	3 x 21 mm	<b>TSTW1GG321015</b>
	3 x 25 mm	<b>TSTW1GG325015</b>
	3 x 31 mm	<b>TSTW1GG331015</b>

### WaveOne® Gold Reciprocating Shaping Files


#### Small – 020, 07 variable taper

	3 x 21 mm	<b>WGS SMALL21</b>
	3 x 25 mm	<b>WGS SMALL25</b>
	3 x 31 mm	<b>WGS SMALL31</b>


#### Primary – 025, 07 variable taper

	3 x 21 mm	<b>WGPRIME21</b>
	3 x 25 mm	<b>WGPRIME25</b>
	3 x 31 mm	<b>WGPRIME31</b>


#### Medium – 035, 06 variable taper

	3 x 21 mm	<b>WGMEDIUM21</b>
	3 x 25 mm	<b>WGMEDIUM25</b>
	3 x 31 mm	<b>WGMEDIUM31</b>

#### Large – 045, 05 variable taper

	3 x 21 mm	<b>WGLARGE21</b>
	3 x 25 mm	<b>WGLARGE25</b>
	3 x 31 mm	<b>WGLARGE31</b>

### Irrigation Needle 30 Gauge

	x5	<b>DSIN30G5</b>
	x40	<b>DSIN30G40</b>

### Paper Points for WaveOne® Gold

#### Box of 180 x Sterile Paper Points

	<b>WGAPSS</b> x 20
	<b>WGAPSP</b> x 25
	<b>WGAPSM</b> x 35
	<b>WGAPSL</b> x 45

### Conform Fit® Gutta-Percha Points for WaveOne® Gold

#### Box of 60 x Conform Fit Gutta Percha Points

	<b>WGGPCS</b> x 20
	<b>WGGPCP</b> x 25
	<b>WGGPCM</b> x 35
	<b>WGGPCL</b> x 45

### GuttaCore® for WaveOne® Gold


#### Blister (5 obturators + 1 size verifier)

	<b>TNSGCWG500SML</b> Small
	<b>TNSGCWG500PRI</b> Primary
	<b>TNSGCWG500MED</b> Medium
	<b>TNSGCWG500LRG</b> Large


#### Box of 5 Blisters

<b>TNSGCWGC00SML</b> Small
<b>TNSGCWGC00PRI</b> Primary
<b>TNSGCWGC00MED</b> Medium
<b>TNSGCWGC00LRG</b> Large


### SmartLite Pro EndoActivator™

	<b>644431</b> Complete kit
	<b>644432</b> Refill kit
	<b>644434</b> 100 Barrier Sleeves
	<b>644435</b> 25 Tips Small (15/02) 22 mm
	<b>644437</b> 25 Tips Medium Long (25/04) 28 mm
	<b>644438</b> Attachment

### Oven

	230V EU	<b>B 00TH PR230V EU</b>
	230V UK	<b>B 00TH PR230V UK</b>
	115V US	<b>B 00TH PR115V US</b>

### WaveOne® Gold Treatment Solution Kit

	<b>TOOW1G0TSOKIT</b>
4	<b>WaveOne® Gold Glider</b> Blister of 3 - 25mm
1	<b>WaveOne® Gold Small</b> 25mm - Pre-Sterile
4	<b>WaveOne® Gold Primary</b> 25mm - Pre-Sterile
1	<b>WaveOne® Gold Medium</b> 25mm - Pre-Sterile
1	<b>WaveOne® Gold Large</b> 25mm - Pre-Sterile
1	<b>WaveOne® Gold Conform Fit® Gutta-Percha Cone Primary</b>
1	<b>WaveOne® Gold Paper Points</b> 180Pk Primary
2	<b>Irrigation Needles</b> (5 units per box)
1	<b>WaveOne® Gold</b> sequence tip card

Rx only



**Files** Dentsply Tusla Dental Specialties, 608 Rolling Hills Drive, Johnson City, TN 37604, USA

**Gutta-Percha & Absorbent Points** Dentsply Tusla Dental Specialties, 608 Rolling Hills Drive, Johnson City, TN 37604, USA

**Irrigation Needle** Produits Dentaires SA, Rue des Bosquets 18, CH-1800, Vevey

**AH Plus® Bioceramic Sealer**  
Manufactured for Dentsply Tusla Dental Specialties, 608 Rolling Hills Drive, Johnson City, TN 37604, USA

**SmartLite® Pro EndoActivator** Dentsply Sirona, 1301 Smile Way | York, PA 17404 USA

